



INDOFINE Chemical Company, Inc.

121 Stryker Lane, Bldg. 30, Suite 1 • Hillsborough, NJ 08844 • U.S.A.

Phone: (908) 359-6778 • FAX: (908) 359-1179

website: www.indofinechemical.com

e-mail: chemical@indofinechemical.com

CERTIFICATE OF ANALYSIS

Catalog Number: 06-497

Product Name: **DEMETHYLWEDELOLACTONE**

CAS Number: [6468-55-9]

Chemical Formula: C₁₅H₈O₇

Molecular Weight: 300.22

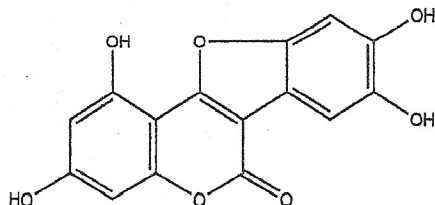
Lot Number: 2205675

Appearance: Light yellow powder

Water Content: 0.9%

Storage: Store in a cool, dry place

Purity(HPLC): 99.4%



Prepared by:
Ramesh Mandadi
Ramesh Mandadi
Director of Operations

Reviewed and Approved by:
Sujata Moton
Sujata Moton
VP



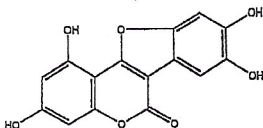
INDOFINE Chemical Company, Inc.

121 Stryker Lane, Bldg. 30, Suite 1 • Hillsborough, NJ 08844 • U.S.A.

Phone: (908) 359-6778 • FAX: (908) 359-1179

website: www.indofinechemical.com

e-mail: chemical@indofinechemical.com



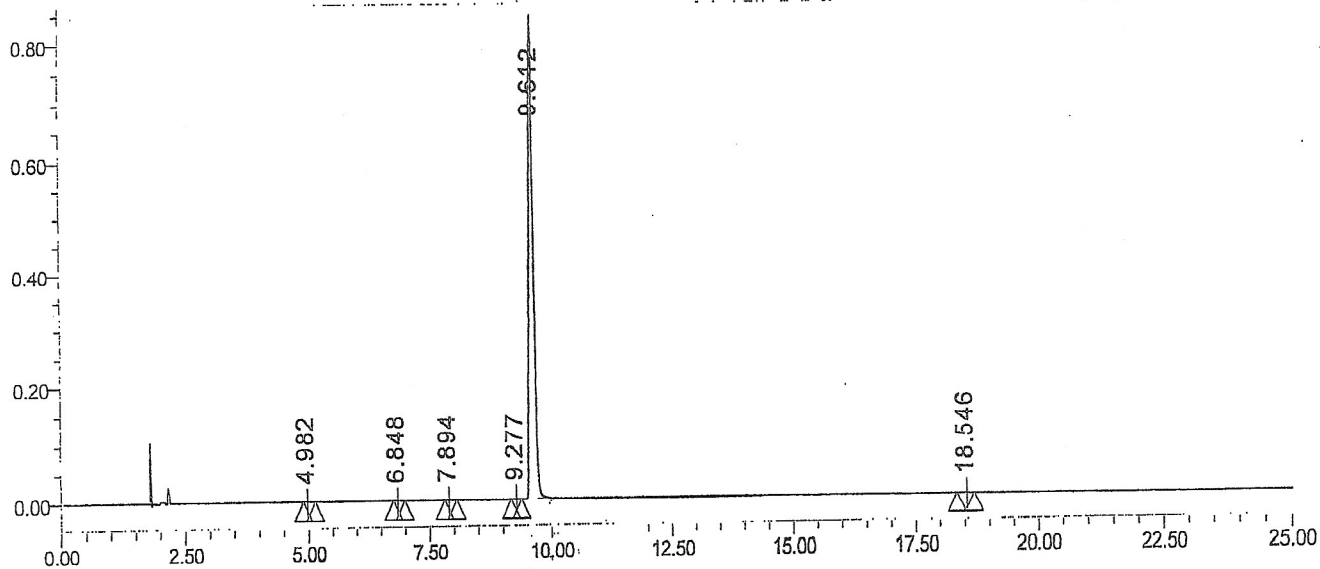
HPLC ANALYSIS

Catalog No.: 06-497
Product Name: Demethylwedelolactone
Lot No.: 2205675

SAMPLE INFORMATION

Sample Name:	Demethylwedelolactone	Acquired By:	
Sample Type:		Sample Set Name	
Vial:	47	Acq. Method Set:	Demethylwedelolactone
Injection #:	1	Processing Method:	sample
Injection Volume:	10.00 ul		
Run Time:	25.0 Minutes		

Auto-Scaled Chromatogram



Peak Results

	RT	Area	% Area	Height	Plate Count	Resolution	Asymmetry
1	4.982	5707	0.11	803	9186.89		1.41
2	6.848	2774	0.05	427	9513.54	9.92	0.98
3	7.894	4717	0.09	741	24196.85	6.56	1.38
4	9.277	9359	0.17	1631	39399.40	8.48	0.99
5	9.612	5362272	99.41	827756	48481.79	2.17	1.37
6	18.546	9342	0.17	1466	165053.71	55.87	0.97